

# GAIA GLAZED EXECUTION

2 Panel Side-Opening



Création SLYCMA 2025 - Photos Fabrice Ferrer - SLYCMA - Photos et illustrations non contractuelles.  
Sous réserve de modifications. Reproductions, même partielle, interdite.



We've got the perfect door to suit your lift !



Creation



Modernisation



Fire-resistant Option

# GAIA 2PSO GLAZED

## Automatic landing doors

### Key features

- Frame thickness 1,5 mm
- Non fire-resistant glazing : 55-2 laminated glass
- Fire-resistant glazing option : PYRODUR PF 30-20 Glass - Thickness 14 mm
- Trolleys : 4.0 mm galvanised steel sheet
- Upper guide rail : protected solid steel 40 × 10
- Standard aluminum sill in steel cradle
- Optional integration of EN 21-21 safety contacts



Fire-resistant Option

### 2PSO Landing door overall dimensions

Dimensions in mm

Clear opening (PL)	600	650	700	750	800	850	900	950	1000	1050	1100	1150	1200	1300	1400	1500
Clear height (HL)	Non fire-resistant execution - HL 2000 to 2500 according clear opening Fire-resistant execution : PL 600 to 1000 - HL maxi 2400 / PL 1000-1100 - HL maxi 2000															
Lintel height	200															
Reduced frame overall dimensions	1060	1135	1210	1285	1360	1435	1510	1585	1660	1735	1810	1885	1960	2110	2260	2410
Full entrance overall dimensions	1060	1135	1210	1285	1360	1435	1510	1585	1660	1735	1810	1885	1960	2110	2260	2410
Rough opening for reduced frame	870	920	970	1020	1070	1120	1170	1200	1270	1320	1370	1420	1470	1570	1670	1770
Rough opening for full entrance	1110	1185	1260	1335	1410	1485	1560	1635	1710	1785	1860	1935	2110	2160	2310	2460
Rough opening height	HL + 230 mm															
Door thickness	155															
Panel return	Counterweight															
Glass surface	Height = HL - 240 X Width = According PL															

# GAIA 2PSO GLAZED

Car doors

## Key features

- Panels : laminated glass 55.2
- Mechanism support in 3.0 mm steel sheet
- Trolleys in 4.0 mm galvanised steel sheet
- Protected solid steel upper guide rail 40 × 10
- Mechanical locking device
- Toothed belt drive
- PM brushless motorisation
- Slycma VVVF control board
- Number of starts per hour : > 360 starts/h



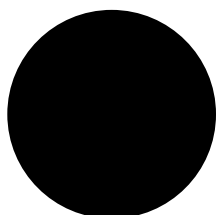
## 2PSO Car door overall dimensions

Dimensions in mm

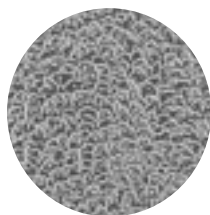
Clear opening (PL)	600	650	700	750	800	850	900	950	1000	1050	1100	1150	1200	1300	1400	1500
Clear height (HL)	2000 to 2500 according clear opening															
Operator overall dimensions	986	1061	1136	1211	1286	1361	1436	1511	1586	1661	1736	1811	1916	2066	2216	2366
Operator height	393															
Operator width	114 (120 included motor)															
Car door locking	🟢															
Fixing height under console	0 mini - 350 maxi															
Standard sill width	90															
Light curtain	Fixed															

# THE GLAZED GAIA RANGE

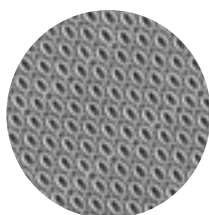
## Finishes



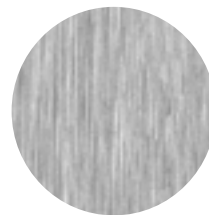
RAL 9005  
Primer



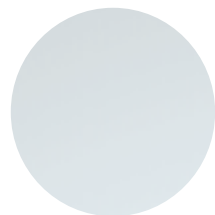
Leather-grain st. steel



Linen-textured st. steel



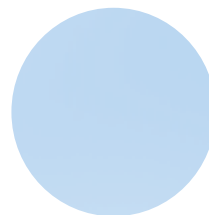
Brushed stainless steel



Opaque glass option  
Not Fire-resistant



Antelio glass option  
Not Fire-resistant



Clear Glass Option  
Not Fire-resistant

Other finishes  
Please contact  
us

## Key benefits

- Guaranteed aesthetics
- Wide range of finishes available
- Robust and easy to install
- Adaptable for full or partial renovation
- Standard lintel : 200 mm

## Certifications

Certifications	GAIA
EN 81-58 (*)	E 30 - EW 30
EN 81-20 / 50	
EN 81-21	
EN 81-70	
55-2 Laminated glass: Not FR PILKINGTON Pyrodur 30-20 glass - Thickness 14 mm : FR	
2014/33/UE	

(\*) Option Pareflammes

## Environments

Industry

Airports

Hotels

Hospitals

Malls

Offices

Public Buildings



Slycma is a signatory of the Code of Good Practice established by the French Lift Federation, to which it has belonged since its creation.



**Our quality approach :**

Certified ISO 9001 and ISO 14001, Slycma is also regularly audited by its customers.

### Contact details

**LYON Headoffice :** 235 rue du Général de Gaulle - 69530 Brignais - Tél: +33 (0)4 78 86 81 00 - slycma@slycma.com

**PARIS Agencies :** 34 route de Longjumeau - 91380 Chilly Mazarin - Tél. : +33 (0)1 69 79 32 10 - magasin.mazarin@slycma.com

16 rue Maurice Thorez - 93200 SAINT DENIS - Tél. : +33 (0)1 48 23 91 92

# GAIA GLAZED EXECUTION

2 Panel Central-Opening



SLYCMA Creation 2025 - Photos by Fabrice Ferrer - SLYCMA - Photos and illustrations are non-contractual. Subject to change. Reproduction, even partial, is prohibited.



We've got the perfect door to suit your lift !



Creation



Modernisation



Fire-resistant Option

# GAIA 2PCO GLAZED

## Automatic landing doors

### Key features

- Frame thickness 1,5 mm
- Non fire-resistant glazing : 55-2 laminated glass
- Fire-resistant glazing option : PYRODUR PF 30-20 Glass - Thickness 14 mm
- Trolleys : 4.0 mm galvanised steel sheet
- Upper guide rail : protected solid steel 40 × 10
- Standard aluminum sill in steel cradle
- Optional integration of EN 21-21 safety contacts



Fire-resistant Option

### 2PCO Landing door overall dimensions

Dimensions in mm

Clear opening (PL)	600	650	700	750	800	850	900	950	1000	1050	1100	1150	1200	1300	1400	1500
Clear height (HL)	Non fire-resistant execution - HL 2000 to 2500 according clear opening Fire-resistant execution : PL 600 to 1000 - HL maxi 2400 / PL 1000-1100 - HL maxi 2000															
Lintel height	200															
Reduced frame overall dimensions	1300	1400	1500	1600	1700	1800	1900	2000	2100	2200	2300	2400	2500	2700	2900	3100
Full entrance overall dimensions	1300	1400	1500	1600	1700	1800	1900	2000	2100	2200	2300	2400	2500	2700	2900	3100
Rough opening for reduced frame	870	920	970	1020	1070	1120	1170	1220	1270	1320	1370	1420	1470	1570	1670	1770
Rough opening for full entrance	1350	1450	1550	1650	1750	1850	1950	2050	2150	2250	2350	2450	2550	2750	2950	3150
Rough opening height	HL + 230 mm															
Door thickness	120															
Panel return	Counterweight															
Glass surface	Height = HL - 240 X Width = According PL															

# GAIA 2PCO GLAZED

Car doors


## Key features

- Panels : laminated glass 55.2
- Mechanism support in 3.0 mm steel sheet
- Trolleys in 4.0 mm galvanised steel sheet
- Protected solid steel upper guide rail 40 × 10
- Mechanical locking device
- Toothed belt drive
- PM brushless motorisation
- Slycma VVVF control board
- Number of starts per hour : > 360 starts/h



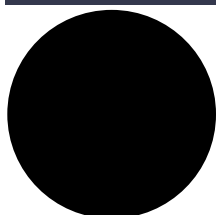
## 2PCO Car door overall dimensions

Dimensions in mm

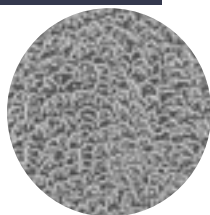
Clear opening (PL)	600	650	700	750	800	850	900	950	1000	1050	1100	1150	1200	1300	1400	1500
Clear height (HL)	2000 to 2500 according clear opening															
Operator overall dimensions	1250	1350	1450	1550	1650	1750	1850	1950	2050	2150	2250	2350	2450	2650	2850	3050
Operator height	393															
Operator width	114 (120 included motor)															
Car door locking																
Fixing height under console	0 mini - 350 maxi															
Standard sill width	45															
Light curtain	Fixed															

# THE GLAZED GAIA RANGE

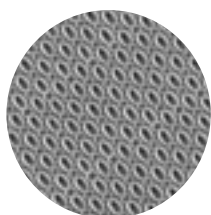
## Finishes



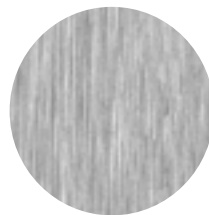
RAL 9005  
Primer



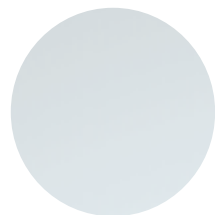
Leather-grain st. steel



Linen-textured st. steel



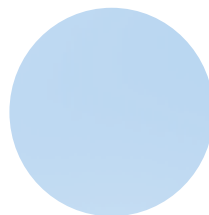
Brushed stainless steel



Opaque glass option  
Not Fire-resistant



Antelio glass option  
Not Fire-resistant



Clear Glass Option  
Not Fire-resistant

Other finishes  
Please contact  
us

## Key benefits

- Guaranteed aesthetics
- Wide range of finishes available
- Robust and easy to install
- Adaptable for full or partial renovation
- Standard lintel : 200 mm

## Certifications

Certifications	GAIA
EN 81-58 (*)	E 30 - EW 30
EN 81-20 / 50	
EN 81-21	
EN 81-70	
66.2 tempered glass : Not F-R PILKINGTON Pyrodur 30-20 glass - Thickness 14 mm : F-R	
2014/33/UE	

(\*) Fire-resistant glazing option

## Environments

Industry

Airports

Hotels

Hospitals

Malls

Offices

Public Buildings



Slycma is a signatory of the Code of Good Practice established by the French Lift Federation, to which it has belonged since its creation.



Our quality approach :

Certified ISO 9001 and ISO 14001, Slycma is also regularly audited by its customers.

### Contact details

**LYON Headoffice** : 235 rue du Général de Gaulle - 69530 Brignais - Tél: +33 (0)4 78 86 81 00 - slycma@slycma.com

**PARIS Agencies** : 34 route de Longjumeau - 91380 Chilly Mazarin - Tél. : +33 (0)1 69 79 32 10 - magasin.mazarin@slycma.com

16 rue Maurice Thorez - 93200 SAINT DENIS - Tél. : +33 (0)1 48 23 91 92

# GAIA GLAZED EXECUTION

4 Panel Central-Opening



Création SLYCMA - 2025 - Photos Fabrice Ferrer - SLYCMA - Photos et illustrations non contractuelles.  
Sous réserve de modifications. Reproduction, même partielle, interdite.



We've got the perfect door to suit your lift !



Creation



Modernisation

# GAIA 4PCO GLAZED

## Automatic landing doors

### Key features

- Frame thickness 1,5 mm
- Non fire-resistant glazing : 55-2 laminated glass
- Trolleys : 4.0 mm galvanised steel sheet
- Upper guide rail : protected solid steel 40 × 10
- Standard aluminum sill in steel cradle
- Optional integration of EN 21-21 safety contacts



### 4PCO Landing door overall dimensions

Dimensions in mm

Clear opening (PL)	1000	1100	1200	1300	1400	1500	1600	1700	1800	1900	2000	2100	2200	2300	2400	2500
Clear height (HL)	2000 to 2500 according clear opening															
Lintel height	200															
Reduced frame overall dimensions	1650	1800	1950	2100	2250	2400	2550	2700	2850	3000	3150	3300	3450	3600	3750	3900
Full entrance overall dimensions	1650	1800	1950	2100	2250	2400	2550	2700	2850	3000	3150	3300	3450	3600	3750	3900
Rough opening for reduced frame	1270	1370	1470	1570	1670	1770	1870	1970	2070	2170	2270	2370	2470	2570	2670	2770
Rough opening for full entrance	1700	1850	2000	2150	2300	2450	2600	2750	2900	3050	3200	3350	3500	3650	3800	3950
Rough opening height	HL + 230 mm															
Door thickness	155															
Panel return	Counterweight															
Glass surface	Height = HL - 240 X Width = According PL															

# GAIA 4PCO GLAZED

Car doors

## Key features

- Panels : laminated glass 55.2
- Mechanism support in 3.0 mm steel sheet
- Trolleys in 4.0 mm galvanised steel sheet
- Protected solid steel upper guide rail 40 × 10
- Mechanical locking device
- Toothed belt drive
- PM brushless motorisation
- Slycma VVVF control board
- Number of starts per hour : > 360 starts/h



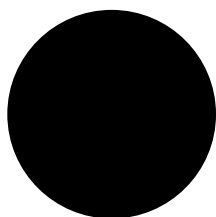
## 4PCO Car door overall dimensions

Dimensions in mm

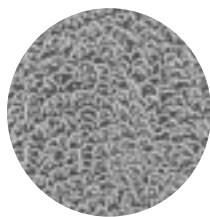
Clear opening (PL)	1000	1100	1200	1300	1400	1500	1600	1700	1800	1900	2000	2100	2200	2300	2400	2500
Clear height (HL)	2000 to 2500 according clear opening															
Operator overall dimensions	1600	1750	1900	2050	2200	2380	2530	2680	2830	2980	3130	3280	3430	3580	3730	3880
Operator height	440															
Operator width	114 (120 included motor)															
Car door locking																
Fixing height under console	0 mini - 350 maxi															
Standard sill width	90															
Light curtain	Fixed															

# THE GLAZED GAIA RANGE

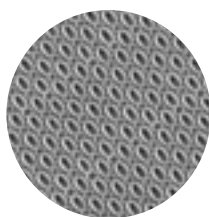
## Finishes



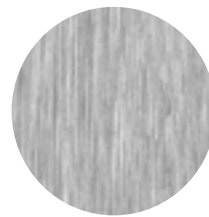
RAL 9005  
Primer



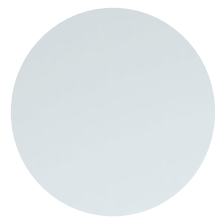
Leather-grain st. steel



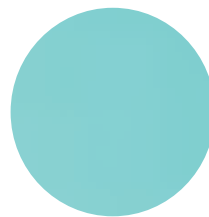
Linen-textured st. steel



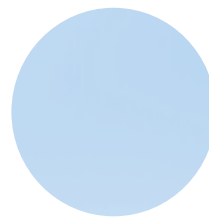
Brushed stainless steel



Opaque glass option  
Not Fire-resistant



Antelio glass option  
Not Fire-resistant



Clear Glass Option  
Not Fire-resistant

Other finishes  
Please contact  
us

## Key benefits

- Guaranteed aesthetics
- Wide range of finishes available
- Robust and easy to install
- Adaptable for full or partial renovation
- Standard lintel : 200 mm

## Certifications

Certifications	GAIA
EN 81-20 / 50	
EN 81-21	
EN 81-70	
Verre feuilleté 55.2	
2014/33/UE	

## Environments

Industry

Airports

Hotels

Hospitals

Malls

Offices

Public Buildings



Slycma is a signatory of the Code of Good Practice established by the French Lift Federation, to which it has belonged since its creation.



**Our quality approach :**

Certified ISO 9001 and ISO 14001, Slycma is also regularly audited by its customers.

### Contact details

**LYON Headoffice :** 235 rue du Général de Gaulle - 69530 Brignais - Tél: +33 (0)4 78 86 81 00 - slycma@slycma.com

**PARIS Agencies :** 34 route de Longjumeau - 91380 Chilly Mazarin - Tél. : +33 (0)1 69 79 32 10 - magasin.mazarin@slycma.com

16 rue Maurice Thorez - 93200 SAINT DENIS - Tél. : +33 (0)1 48 23 91 92